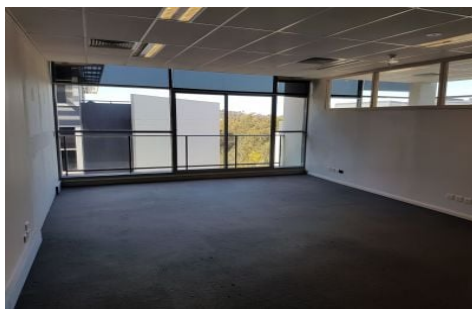


SWELL



4307/4 Daydream Street Warriewood NSW

Beat the banks and enjoy a high return. This is a rare opportunity to invest a quality office in an idyllic location within the Quattro Corporate development. This is a modern commercial development designed in a landscaped and bush land setting. This office offers a professional corporate environment, suitable for many types of businesses.

- * Total area 82sqm
- * Corner office with great natural light facing the North East corner
- * Floor to ceiling windows on the North and East corners
- * Fully cabled, sunscreen blinds, aerial for TV
- * Balcony providing natural ventilation with a pleasant outlook

Type : Offices
Building Size : 82 sqm
View : <https://portfolio.websites.reapit.com.au/swell/6683322>



Belinda Brown
02 9834 1234

[For full version visit the website](https://portfolio.websites.reapit.com.au/swell)

<https://portfolio.websites.reapit.com.au/swell>