

# Phoenix

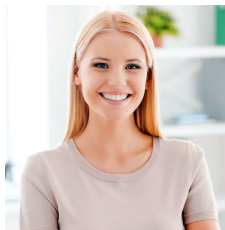


## C5/15 Narabang Way Belrose NSW

This is a very versatile warehouse made up of approximately 50% warehouse and 50% mezzanine, making it perfect for many types of businesses looking to, but not limited to; storing, racking, packing and distribution.

The stylish property is located in C Block and faces north, allowing it to be bathed in natural light from its stunning tinted windows and front warehouse tilted door. The top floor has reverse cycle air-conditioning and commands views out over to the beautiful bush valleys of Garigal National Park. The office boasts 2 executive offices that sit on the edge of a large open planned area, suitable for 6 or more staff.

**Type** : Industrial  
**Price** : Contact Agent  
**Building Size** : 165 sqm  
**View** : <https://portfolio.websites.reapit.com.au/phoenix/6683336>



**Alicia Thomas**  
02 8888 8888

[For full version visit the website](https://portfolio.websites.reapit.com.au/phoenix)

<https://portfolio.websites.reapit.com.au/phoenix>