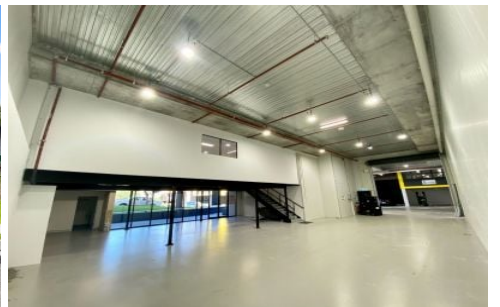
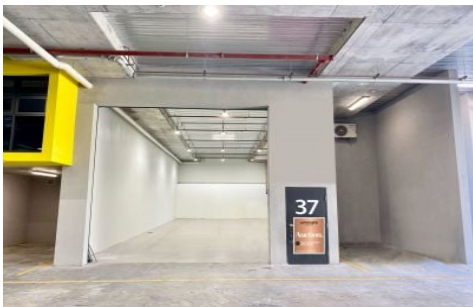


Phoenix



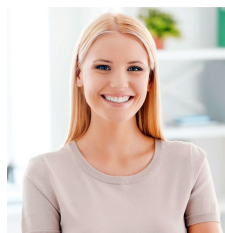
46/4-7 Villiers Place Cromer NSW

This warehouse boasts 328sqm of building, consisting of 211sqm of warehouse floor and 117sqm of internal office space. Plus 3 car spaces. This property would suit any owner-occupier or wise investor.

Immerse and grow your capital investment OR business in the best warehouse, in the best position, in the newest warehouse complex on the Northern Beaches.

Your tenants or staff will flourish and thank you for the increased efficiencies that come with this enormous high clearance warehouse, which also incorporates an amazing ultra-modern, fully renovated mezzanine office area. Enjoy the benefits of a beautifully extended kitchenette and staff room area that spills out into a pleasant grassy sphere,

Type : Industrial
Building Size : 328 sqm
View : <https://portfolio.websites.reapit.com.au/phoenix/6683326>



Alicia Thomas
02 8888 8888

[For full version visit the website](https://portfolio.websites.reapit.com.au/phoenix)

<https://portfolio.websites.reapit.com.au/phoenix>