

# Phoenix



## 10 Hastings Street Warriewood NSW

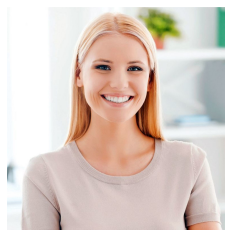
3  1  2 

Claiming the best position in the 'Sunland Estate' this beautifully conceived home's timeless crafted interiors and the extensive use of glass harness the northerly sunshine and take in serene green outlooks of the neighbouring park. The free-flowing living and dining space is anchored by a gourmet kitchen with walls of sliding doors leading out to a sunny entertainer's deck and a child-friendly garden. A family focused layout features four big bedrooms, including a private master suite, plus a casual living area on the upper level. Its family orientated neighbourhood is positioned with access to the area's abundant nature reserves, picturesque walking trails, child-friendly parks, local shops, schools, express B-line city buses and surf beaches.

**Type** : Townhouse

**Price** : Auction

**View** : <https://portfolio.websites.reapit.com.au/phoenix/672028>



**Alicia Thomas**  
02 8888 8888



**Peter Moon**  
02 9999 9999

[For full version visit the website](https://portfolio.websites.reapit.com.au/phoenix)

<https://portfolio.websites.reapit.com.au/phoenix>