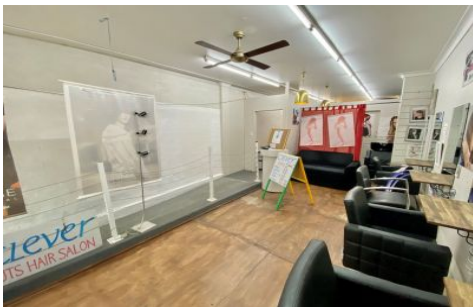


Phoenix



1/31-33 Sydney Road Manly NSW

- * Total area: 64m²
- * Excellent floor to ceiling glass sliding doors fronting onto Sydney Road's bustling pedestrian precinct
- * Suitable floorplan and layout for a variety of retail businesses or professional uses
- * Freshly painted and air-conditioned throughout
- * Fantastic exposure and signage opportunities for incoming tenant
- * Disabled access ramp at front of the shop
- * Nicely presented toilet in the rear shop area
- * Various council carparks within close proximity of premises
- * Situated just off Manly Corso - the Northern Beaches busiest retail and pedestrian precincts
- * Outgoings \$10,084 approx. per annum

Type	: Retail
Price	: \$62,000 + GST Net
Building Size	: 64 sqm
View	: https://portfolio.websites.reapit.com.au/phoenix/6672009



Carole Frankston
02 8888 8888

[For full version visit the website](https://portfolio.websites.reapit.com.au/phoenix)

<https://portfolio.websites.reapit.com.au/phoenix>