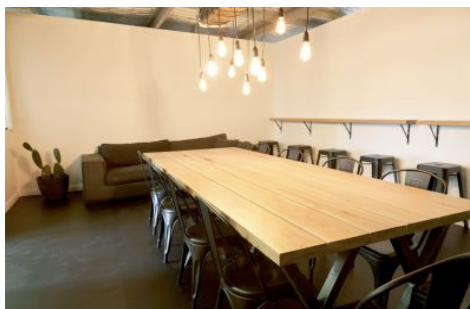


Phoenix



13/1-3 Apollo Street Warriewood NSW

This is a unique industrial style space split over two levels, perfect for businesses looking for a studio or office where their team can crunch numbers in the boardroom or get creative utilising the photography space, making it the perfect multipurpose space for any modern business. The property includes custom designed furniture and workstations, taking away the hassle and expense of bringing your own. Walk in & get to business, this space is ready to go and won't be available long.

- * Internal area of 138sqm
- * Fully-furnished
- * Kitchenette
- * Shared male and female amenities
- * Boardroom

Type : Offices
Building Size : 138 sqm
View : <https://portfolio.websites.reapit.com.au/phoenix/6672001>



Carole Frankston
02 8888 8888

[For full version visit the website](https://portfolio.websites.reapit.com.au/phoenix)

<https://portfolio.websites.reapit.com.au/phoenix>