

LighthouseGroup

REAL ESTATE



1223/15 Howard Avenue Dee Why NSW

3 2 2

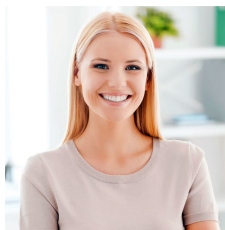
* For a private inspection or virtual tour of this property please contact the agent to arrange an appointment.

Holding a 12th floor position within the landmark 'Lighthouse' complex, this 'as new' apartment captures panoramic district views reaching all the way to the city skyline. Clean lines, stylish interiors, quality fixtures and finishes and a spacious three-bedroom layout with wall-to-wall windows framing the wide-open vista and a covered balcony for dining alfresco while enjoying magical sunsets. It makes for comfortable contemporary living with level lift access to secure parking and resort-style facilities including a heated pool, spa, gym and children's playground. Day to day living is a dream with direct access to cosmopolitan dining options, offering everything from

Type : Unit

Price : Auction Guide \$1,400,000

View : <https://portfolio.websites.reapit.com.au/lighthouse/sale/nsw/northern-beaches/dee-why/residential/unit/6683376>



Alicia Thomas
02 8888 8888



Richard Hanson
02 9999 9999

[For full version visit the website](https://portfolio.websites.reapit.com.au/lighthouse)

<https://portfolio.websites.reapit.com.au/lighthouse>