



## 1223/15 Howard Avenue Dee Why NSW

3 2 2

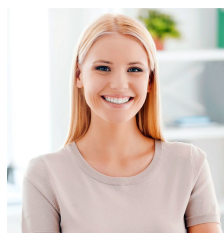
\* For a private inspection or virtual tour of this property please contact the agent to arrange an appointment.

Holding a 12th floor position within the landmark 'Lighthouse' complex, this 'as new' apartment captures panoramic district views reaching all the way to the city skyline. Clean lines, stylish interiors, quality fixtures and finishes and a spacious three-bedroom layout with wall-to-wall windows framing the wide-open vista and a covered balcony for dining alfresco while enjoying magical sunsets. It makes for comfortable contemporary living with level lift access to secure parking and resort-style facilities including a heated pool, spa, gym and children's playground. Day to day living is a dream with direct access to cosmopolitan dining options, offering everything from trendy bars, delis and sushi bars to supermarkets and express B-line city buses, while close proximity to Dee Why Beachfront makes it easy to enjoy the great outdoors.

- Presented in as new condition, one owner since built two years ago

[For full version visit the website](https://portfolio.websites.reapit.com.au/headland/6683376)

**Type** : Unit  
**Price** : Auction Guide \$1,400,000  
**View** : <https://portfolio.websites.reapit.com.au/headland/6683376>



**Alicia Thomas**  
02 8888 8888



**Richard Hanson**  
02 9999 9999