



### C5/15 Narabang Way Belrose NSW

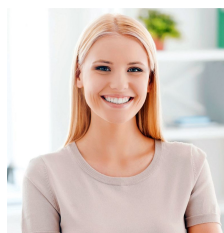
This is a very versatile warehouse made up of approximately 50% warehouse and 50% mezzanine, making it perfect for many types of businesses looking to, but not limited to; storing, racking, packing and distribution.

The stylish property is located in C Block and faces north, allowing it to be bathed in natural light from its stunning tinted windows and front warehouse tilted door. The top floor has reverse cycle air-conditioning and commands views out over to the beautiful bush valleys of Garigal National Park. The office boasts 2 executive offices that sit on the edge of a large open planned area, suitable for 6 or more staff.

- \* Total area: 165sqm
- \* 4 car spaces (3 undercover)
- \* Warehouse height 3.8 meters
- \* Large open planned office area
- \* 2 individual executive offices
- \* Tiled entranceway and staircase

[For full version visit the website](https://portfolio.websites.reapit.com.au/headland/6683336)

<b>Type</b>	: Industrial
<b>Price</b>	: Contact Agent
<b>Building Size</b>	: 165 sqm
<b>View</b>	: <a href="https://portfolio.websites.reapit.com.au/headland/6683336">https://portfolio.websites.reapit.com.au/headland/6683336</a>



**Alicia Thomas**  
**02 8888 8888**