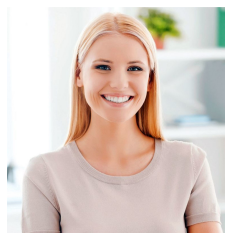


86/70 Middleton Road Cromer NSW

- * Total Internal Area: 64m²
- * Dimensions - 8.8m length x 7.3m width
- * Newly completed development - The Vault, Cromer
- * Great position within complex - 4th unit from the entrance gate
- * Excellent access with 2 roller doors
- * Divided into 2 units that can be recombined
- * Bonus mezzanine area of 46sqm (left 26sqm, right 20sqm)
- * Perfect for investors or owner occupiers. Occupy all or rent one out!
- * Layout of complex allows for occupant to drive up to the door
- * Internal clearance up to around 5m
- * Shared disabled access amenities in complex
- * 24/7 secure access and CCTV building system
- * Roller door access with individual security options
- * Individually metered with phone data and power connection
- * LED lighting included
- * Zoning - General Industrial IN1

Type : Industrial
Building Size : 64 sqm
View : <https://portfolio.websites.reapit.com.au/headland/6672004>



Alicia Thomas
02 8888 8888

[For full version visit the website](https://portfolio.websites.reapit.com.au/headland)

<https://portfolio.websites.reapit.com.au/headland>