

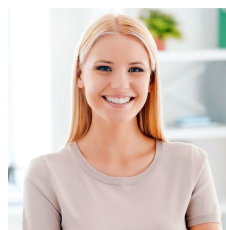


C5/15 Narabang Way Belrose NSW

This is a very versatile warehouse made up of approximately 50% warehouse and 50% mezzanine, making it perfect for many types of businesses looking to, but not limited to; storing, racking, packing and distribution.

The stylish property is located in C Block and faces north, allowing it to be bathed in natural light from its stunning tinted windows and front warehouse tilted door. The top floor has reverse cycle air-conditioning and commands views out over to the beautiful bush valleys of Garigal National Park. The office boasts 2 executive offices that sit on the edge of a large open planned area, suitable for 6 or more staff.

Type	: Industrial
Price	: Contact Agent
Building Size	: 165 sqm
View	: https://portfolio.websites.reapit.com.au/griffon/sale/nsw/northern-beaches/belrose/commercial/industrial/6683336



Alicia Thomas
02 8888 8888

[For full version visit the website](https://portfolio.websites.reapit.com.au/griffon)

<https://portfolio.websites.reapit.com.au/griffon>