



**12/163-165 Pacific Parade Dee Why NSW**

2  2  1 

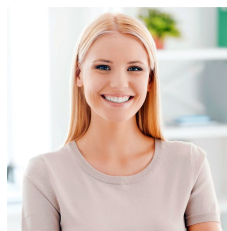
Gracing what is unquestionably Dee Why's most applauded position. These benchmark two and three-bedroom, garden, sub-penthouse and penthouse residences deliver the finest architecture and design ever seen in this prized coastal enclave of Dee Why.

From the moment you arrive, the quality and generosity of these residences is striking, free flowing layouts, seamless outdoor connection to oversized terraces and state of the art technology unite in the most uplifting of ways.

When you leave your front door, there's so much to explore, Rosina places you 150m to Dee Why Rockpool, glistening beachfront and a short stroll to it's cosmopolitan seaside dining strip.

**Type** : Unit

**View** : <https://portfolio.websites.reapit.com.au/bombora/6683368>



**Alicia Thomas**  
 02 8888 8888



**Richard Hanson**  
 02 9999 9999

[For full version visit the website](https://portfolio.websites.reapit.com.au/bombora)

<https://portfolio.websites.reapit.com.au/bombora>